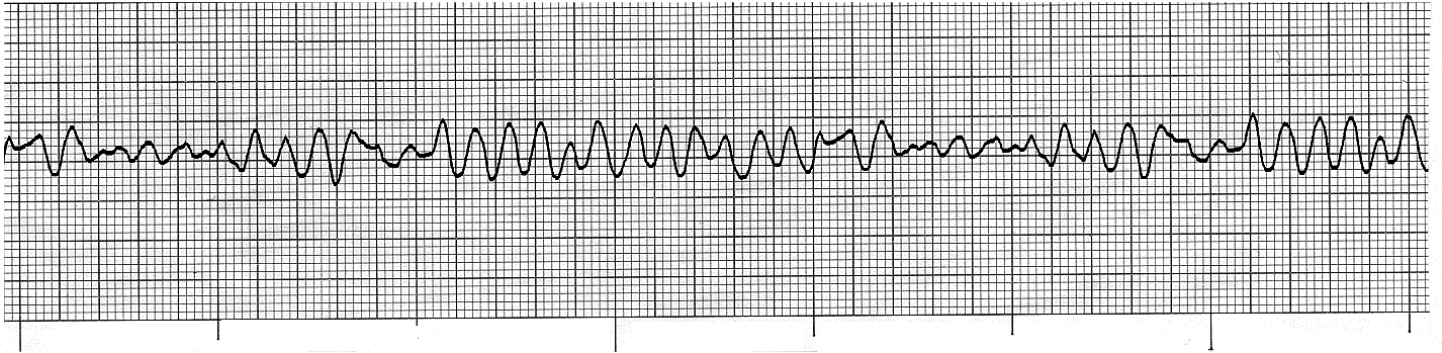


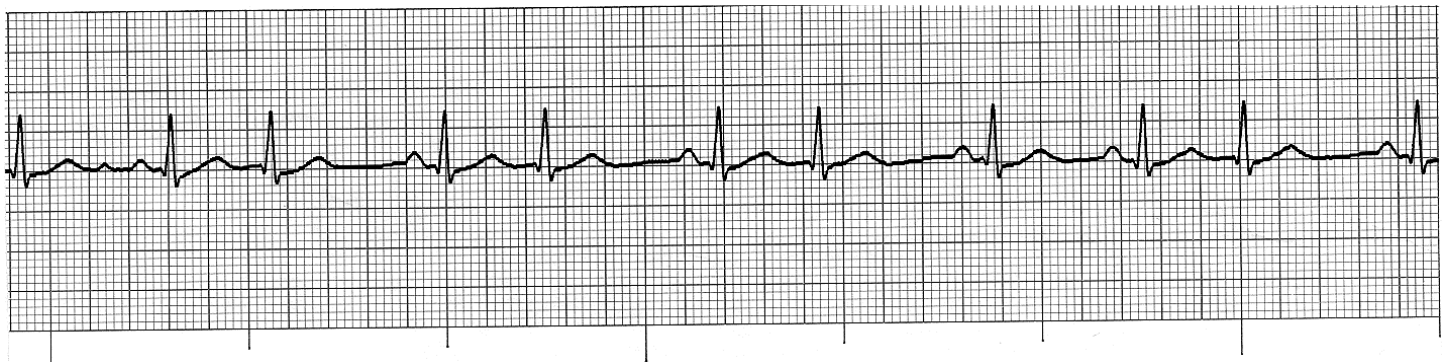
ADVANCED CARDIOVASCULAR LIFE SUPPORT RHYTHM INTERPRETATION REVIEW

Analyse each rhythm strip presented below. An answer key is provided. Knowledge of rhythm interpretation is a prerequisite for Advanced Cardiovascular Life Support courses.

1.



2.



3.



4.



5.



6.



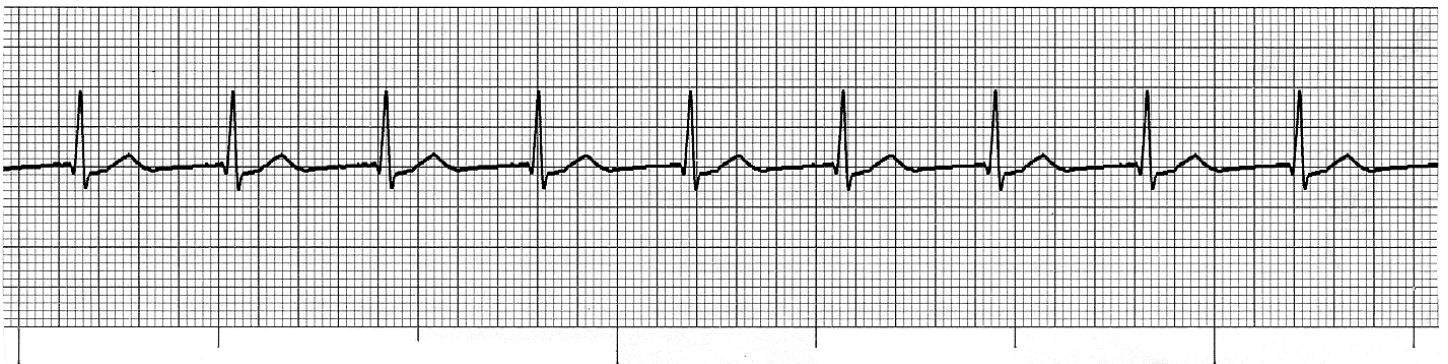
7.



8.



9.



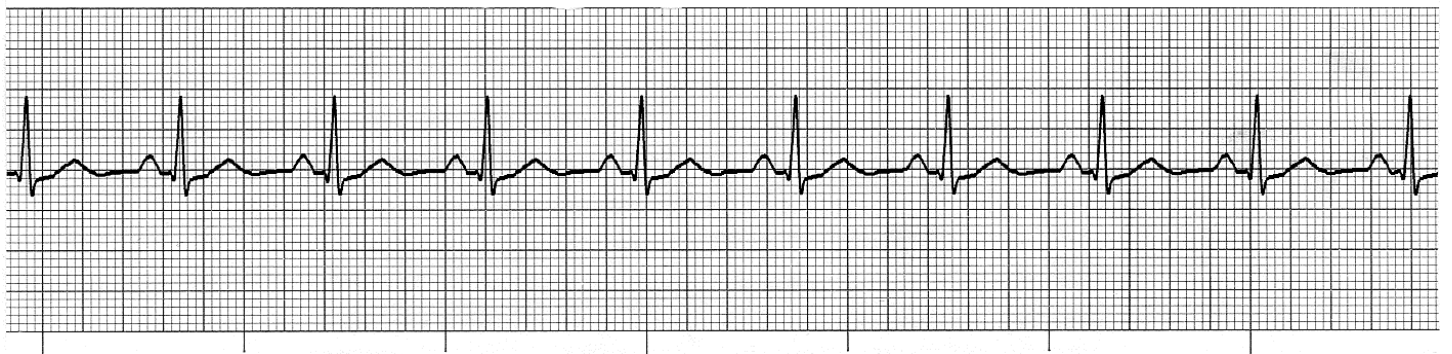
10.



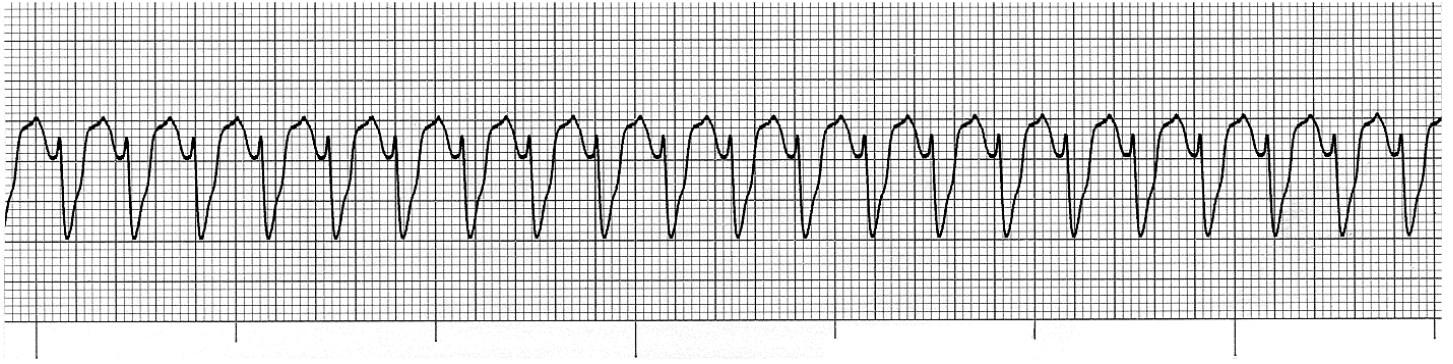
11.



12.



13.



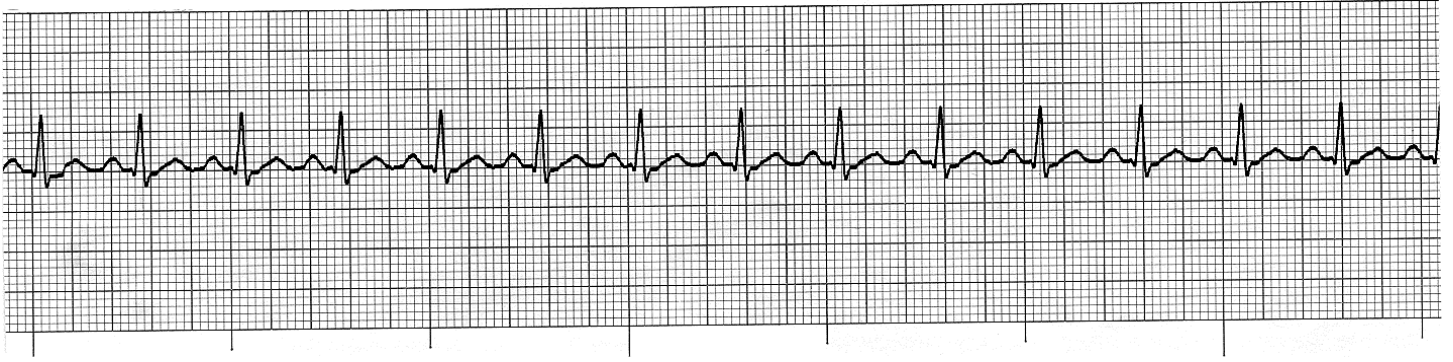
14.



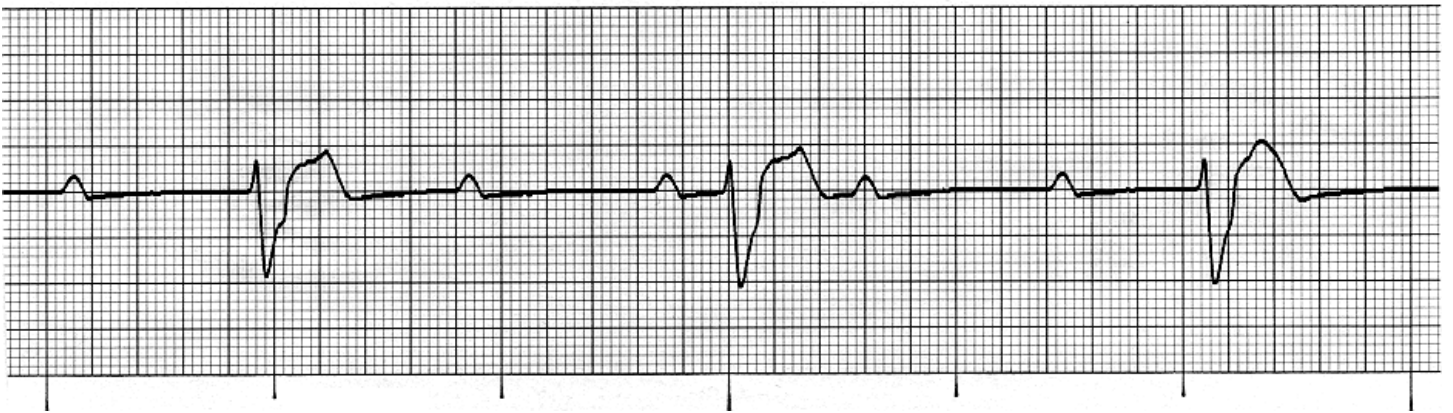
15.



16.



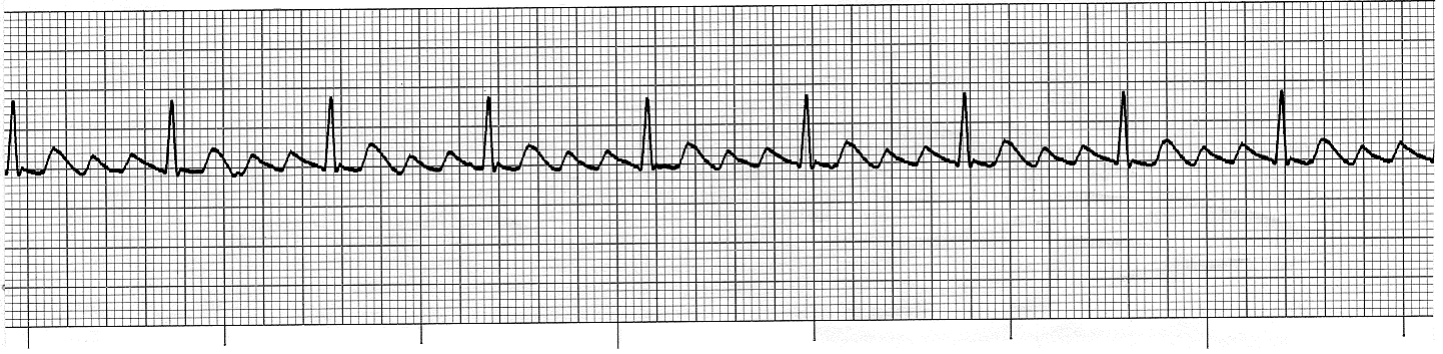
17.



18.



19.



20.



ANSWER KEY TO RHYTHM INTERPRETATION REVIEW

- 1** Ventricular Fibrillation
- 2** Sinus Rhythm with PJC's
- 3** 2nd Degree Heart Block Mobitz Type I
- 4** Atrial Fibrillation
- 5** Sinus Rhythm with Multifocal PVC's
- 7** Sinus Rhythm with Unifocal PVCs
- 6** 1st Degree Heart Block
- 8** Sinus Rhythm with PAC's
- 9** Accelerated Junctional Rhythm
- 10** Asystole
- 11** Junctional Escape Rhythm
- 12** Normal Sinus Rhythm
- 13** Ventricular Tachycardia
- 14** Sinus Bradycardia
- 15** Ventricular Bigeminy
- 16** Sinus Tachycardia
- 17** 3rd Degree Heart Block (complete)
- 18** Idioventricular Rhythm
- 19** Atrial Flutter
- 20** 2nd Degree Heart Block Mobitz Type II